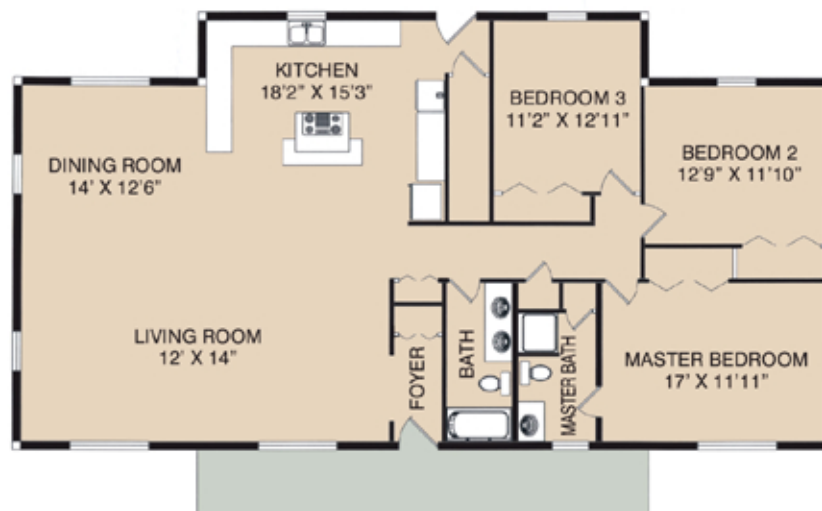




CONSERVATIVE BUT ROOMY

Our Mountaineer families have adopted this design for a variety of family sizes and lifestyles. The plan adapts easily to four bedrooms or even a raised center roof for added living space. Cathedral ceilings are "no problem" wherever you choose. Easy handicap accessibility.



Main Floor Plan

Overall Dimension: 26' x 62'

Living Area: 1,782 sq. ft. / Total with Finished Basement: 3,564 sq. ft. / Porch roof style shown is optional