

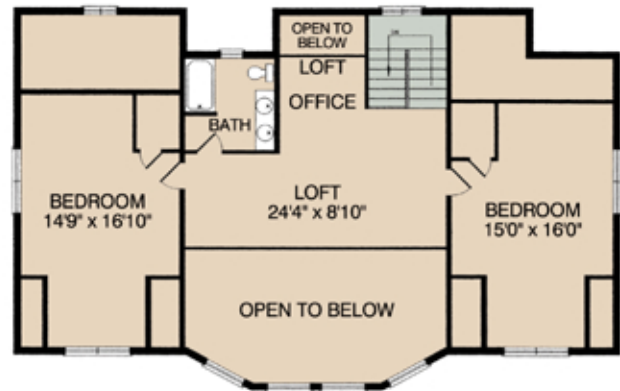


WATCH THE EAGLES SOAR

From the deck, your great room, loft balcony, or master bedroom. All will be oriented toward the beautiful great outdoors and your unique viewscape from this specialty Mountaineer model. Build on a full walk-out basement and enjoy four or more bedrooms, two great rooms, and lots of storage. A wonderful home with lots of opportunity to customize. Easy handicap accessibility. Additional living space can be created by finishing the basement.



Main Floor Plan



Second Floor Plan

Overall Dimension: 36'6" x 56'

Living Area: 2,900 sq. ft. / Total with Finished Basement: 4,706 sq. ft.