

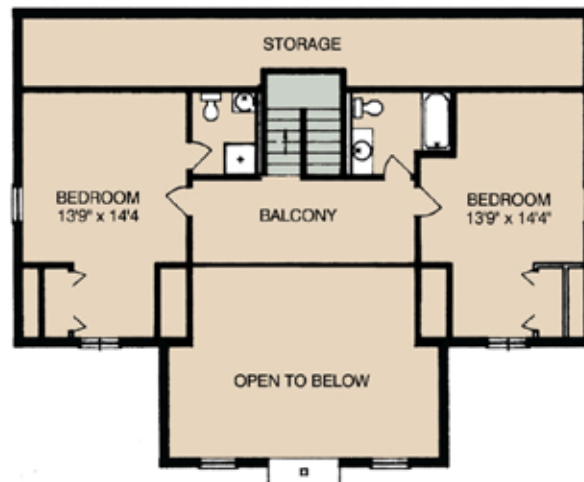


## VERSATILITY & EXPANDABILITY

The Monte Vista standard plan has three master suites and 2,382 sq. ft. Just add a full height foundation on a sloping lot with a touch of ingenuity and voila! Enjoy a five, six, or even seven bedroom home. Great for large families to get "back in touch." Decks and porches shown are optional.



Main Floor Plan



Second Floor Plan

Overall Dimension: 38' x 48'

Living Area: 2,438 sq. ft. / Total with Finished Basement: 3,972 sq. ft.